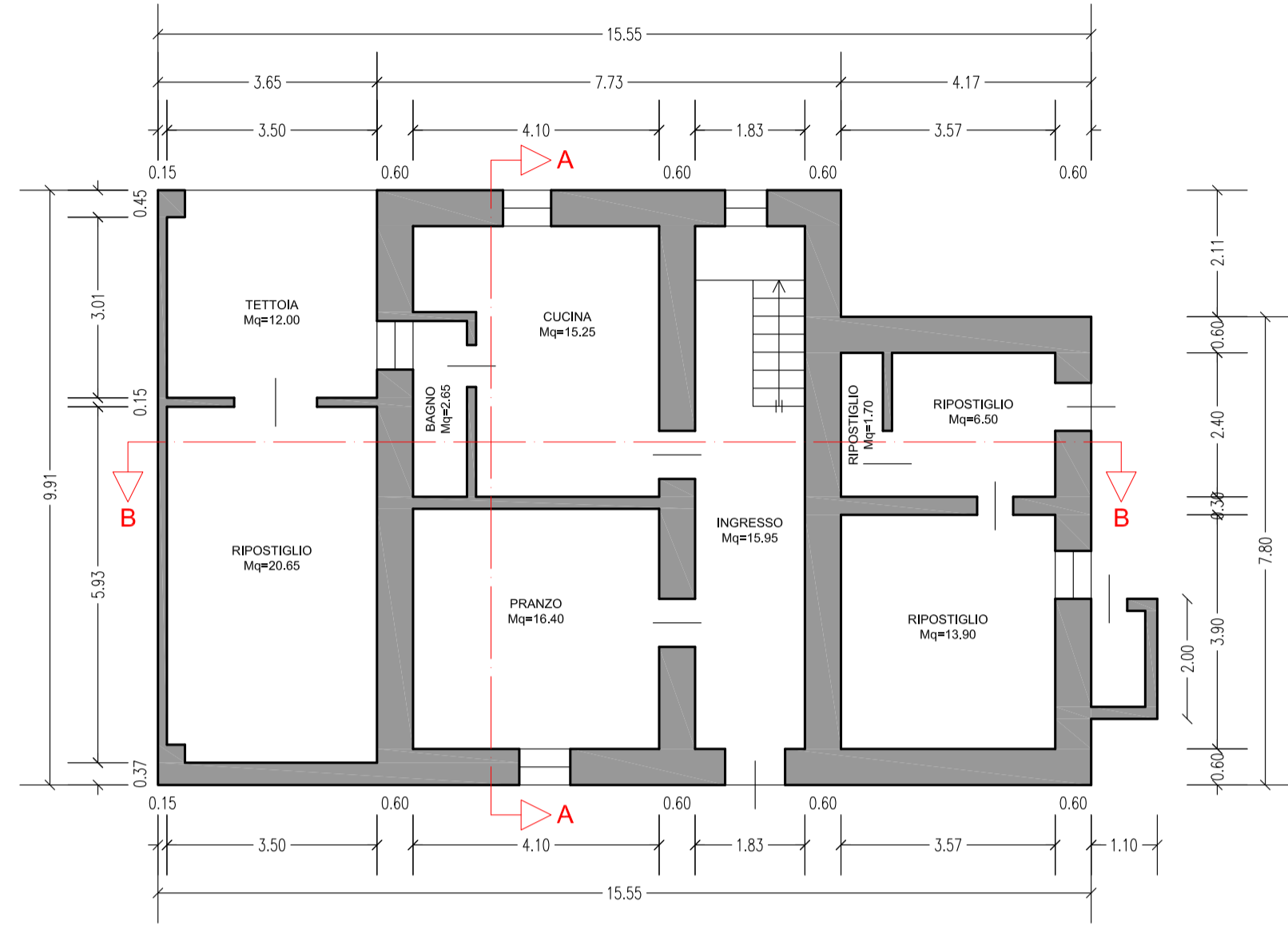
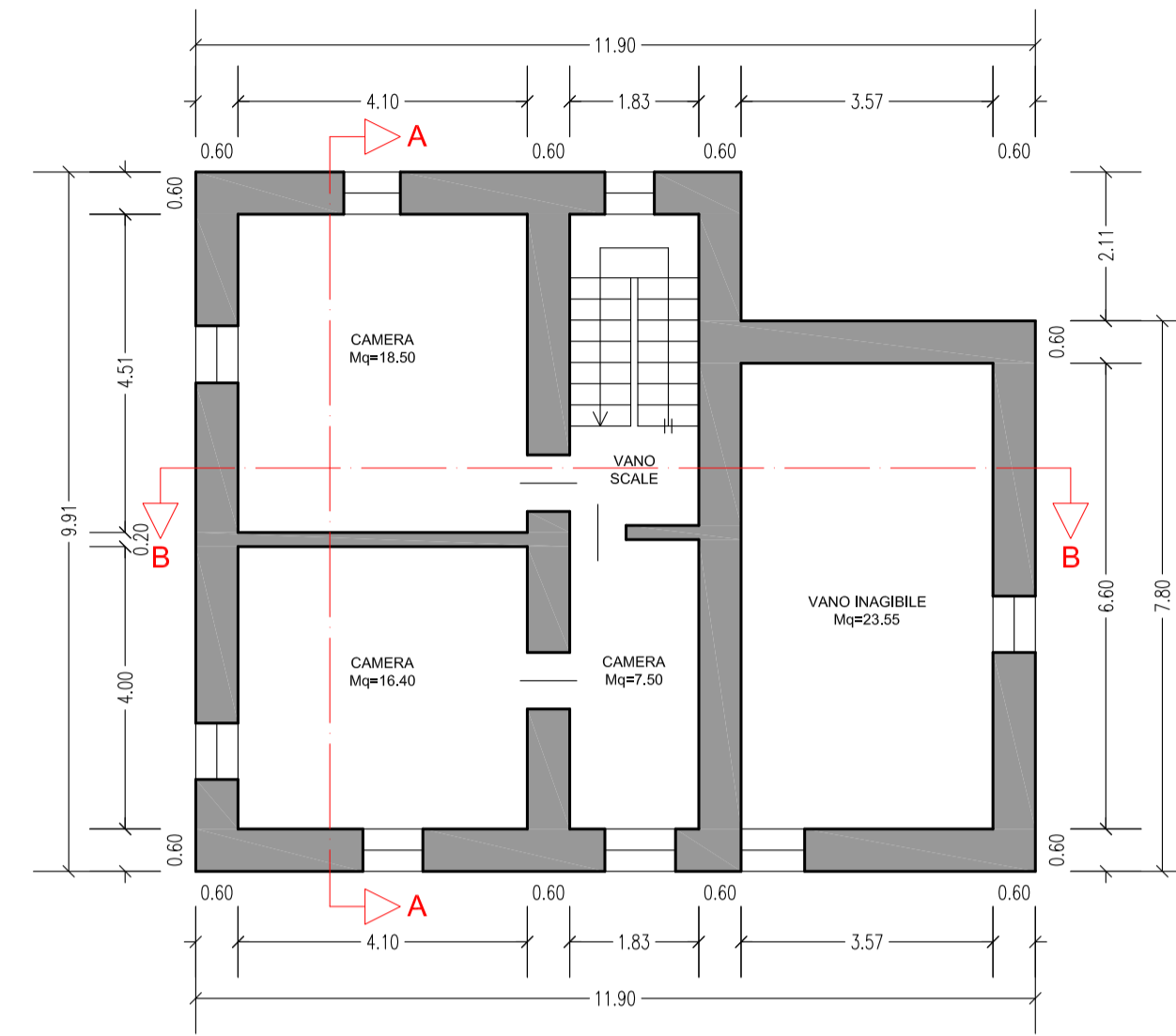


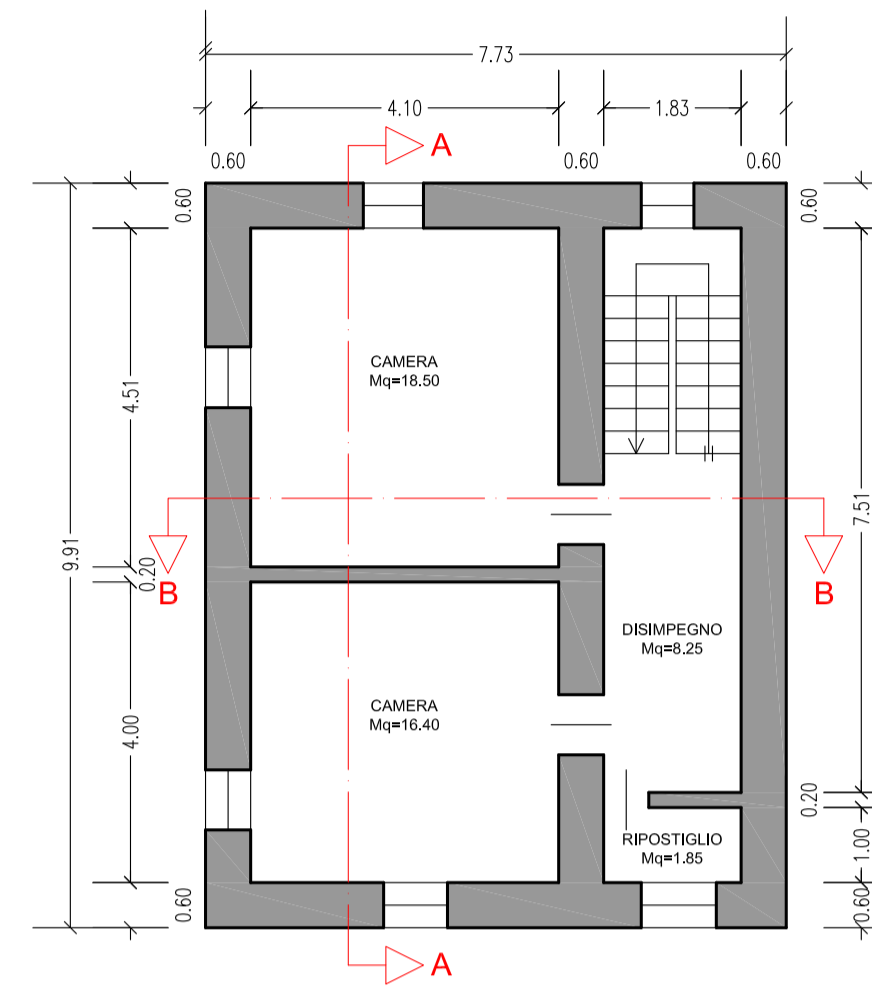
PIANTA PIANO TERRA  
SCALA 1:00



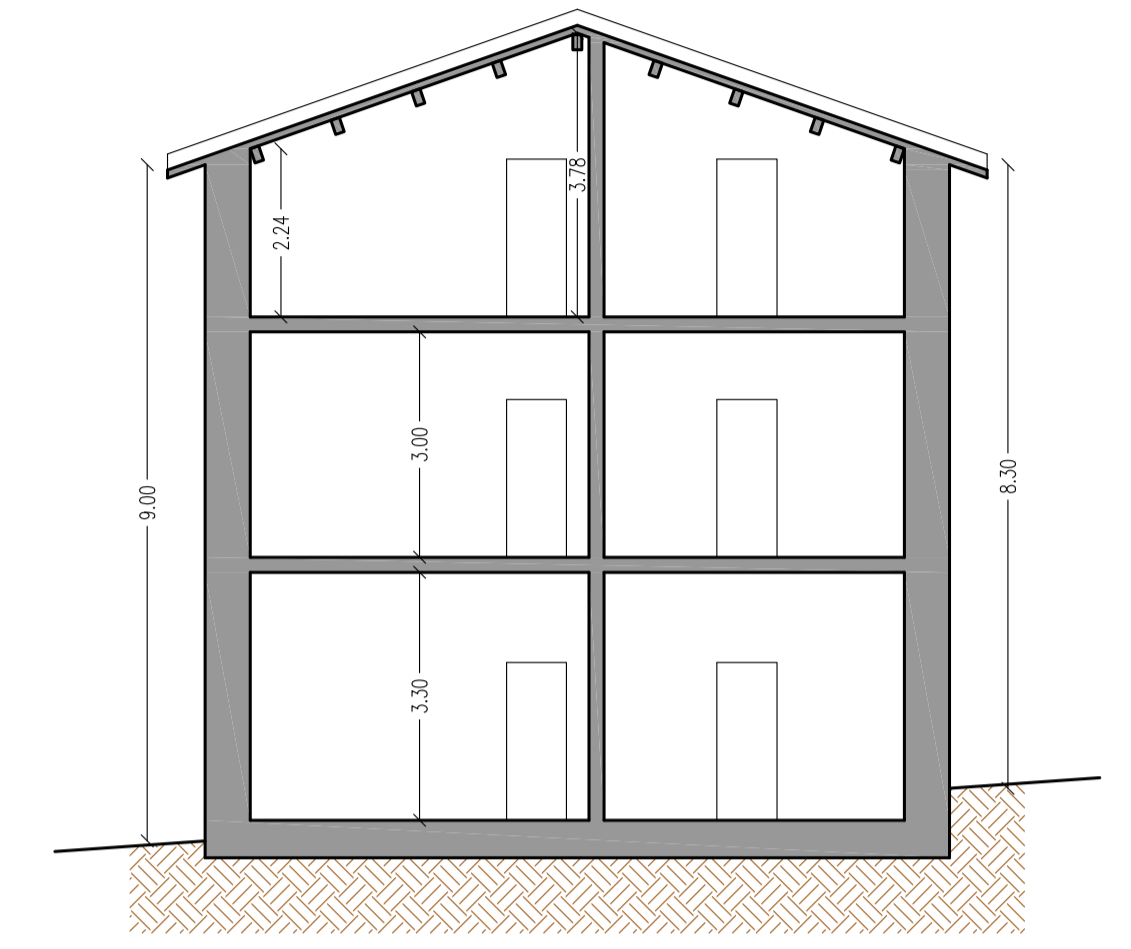
PIANTA PIANO PRIMO  
SCALA 1:00



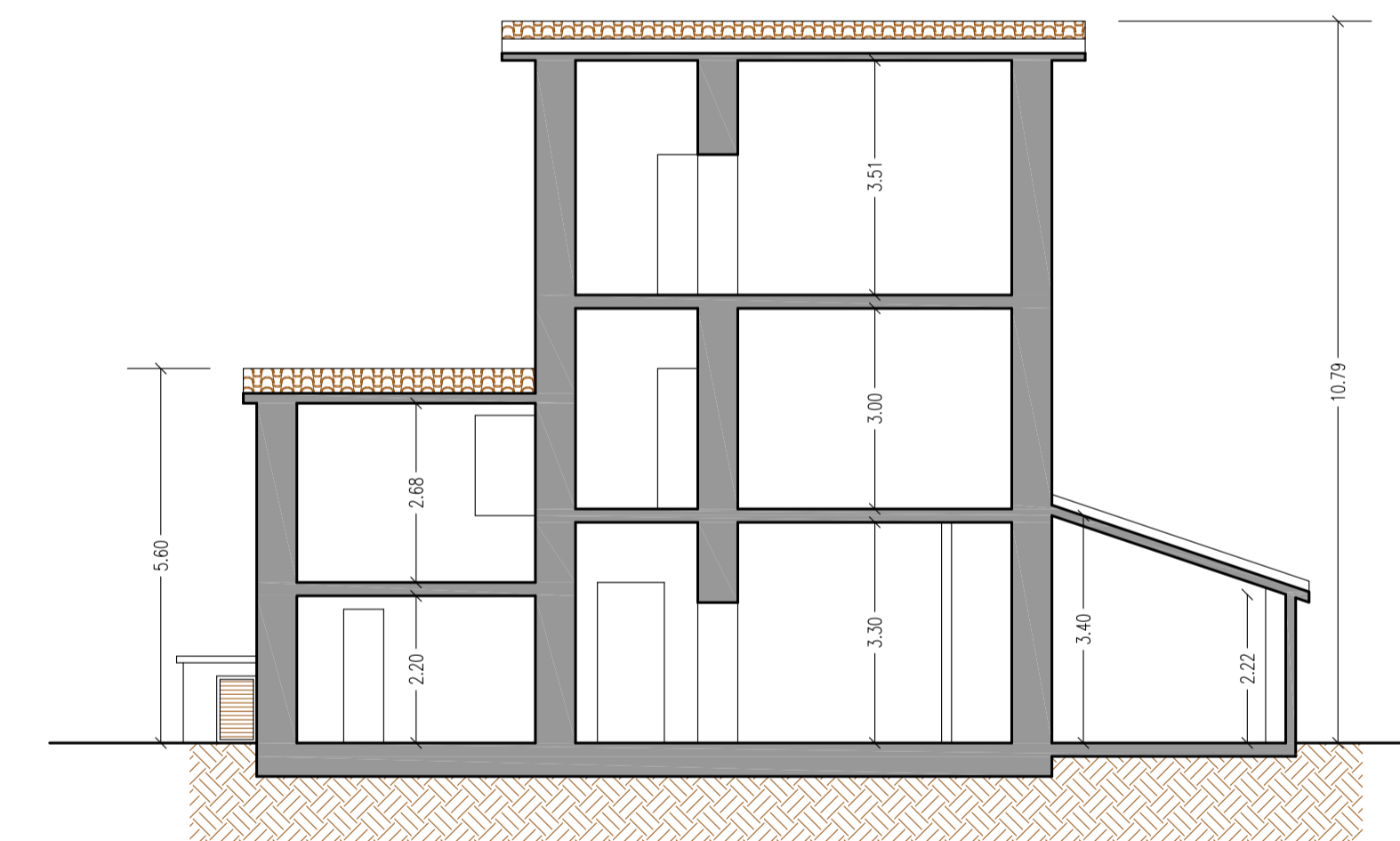
PIANTA PIANO SECONDO  
SCALA 1:00



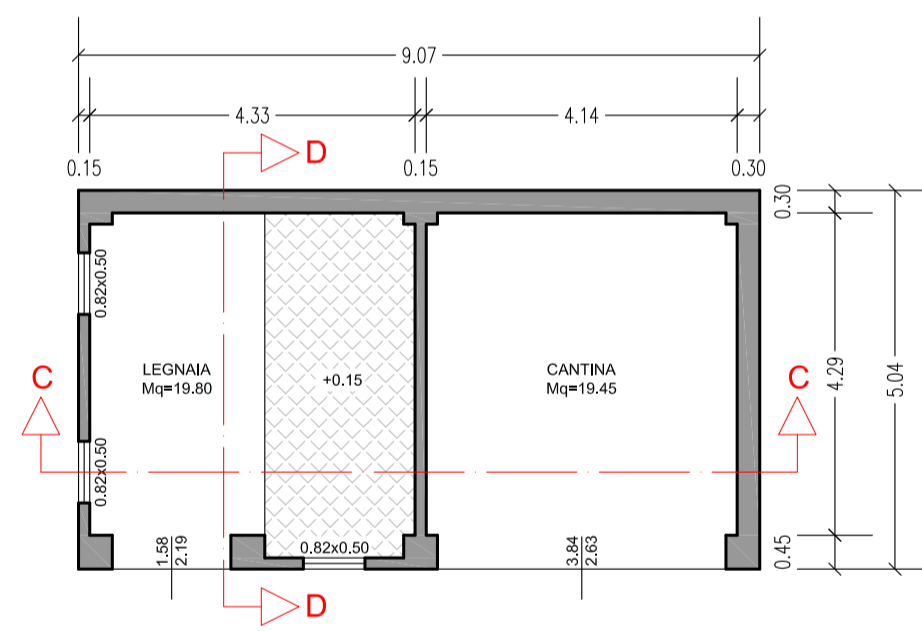
SEZIONE A-A  
SCALA 1:00



SEZIONE B-B  
SCALA 1:00



PIANTA PIANO TERRA  
SCALA 1:00



SEZIONE C-C  
SCALA 1:00

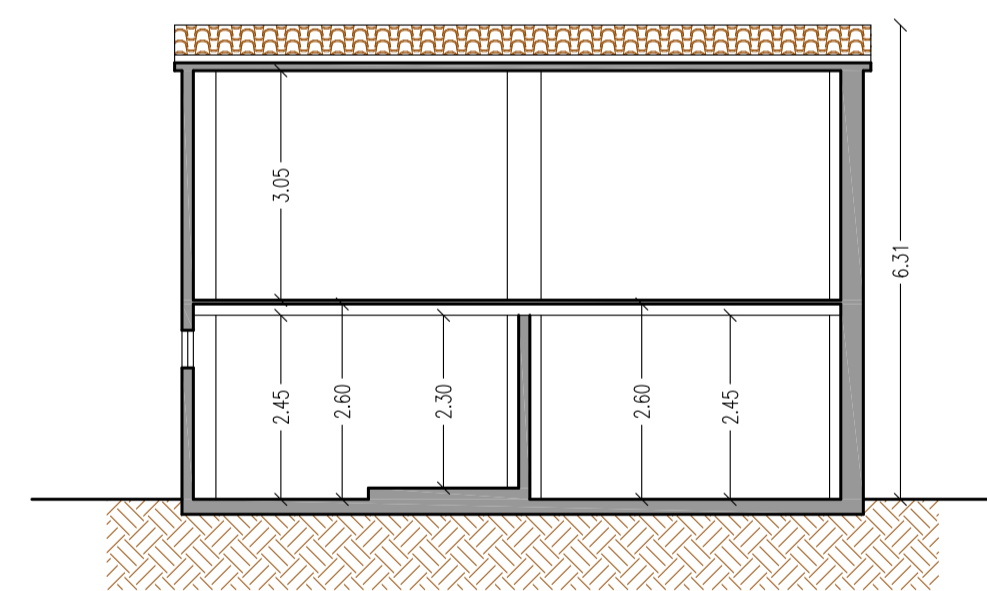
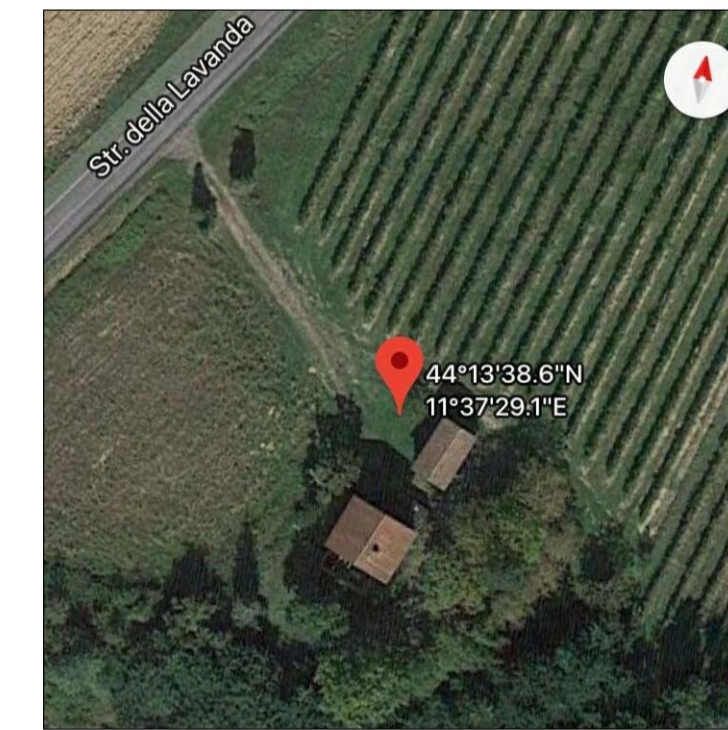
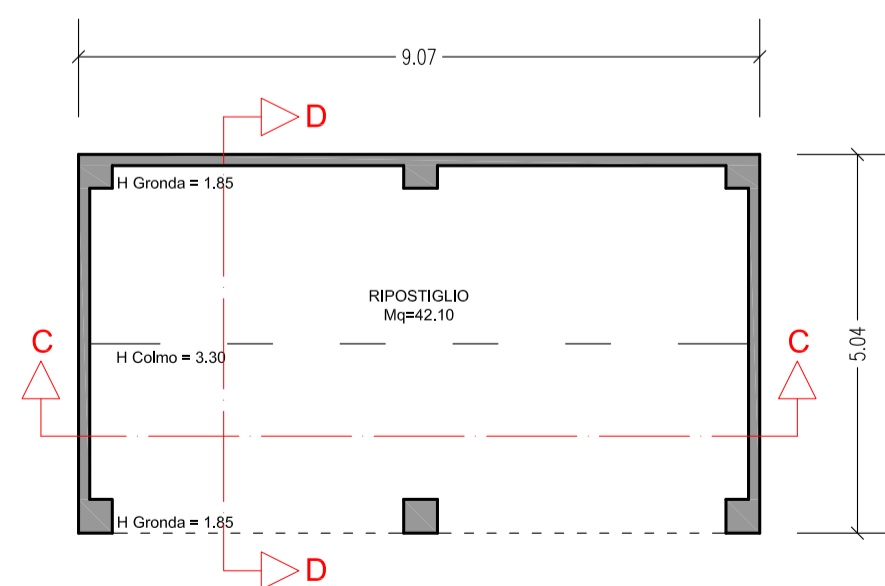


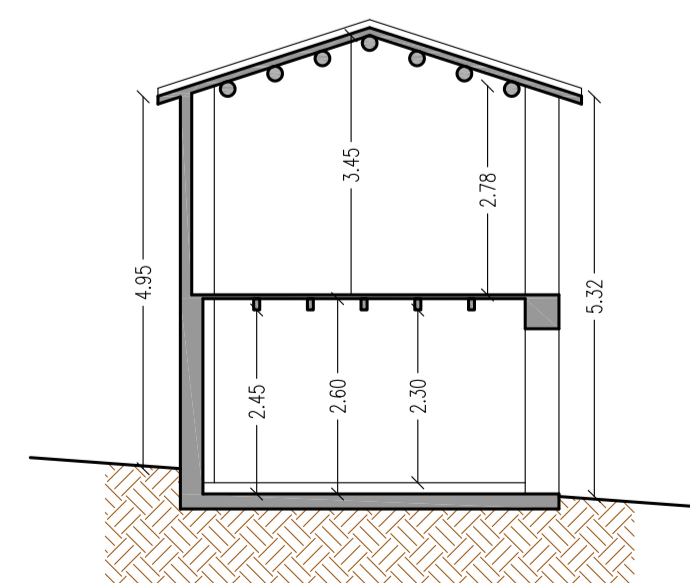
FOTO AEREA



PIANTA PIANO PRIMO  
SCALA 1:00



SEZIONE D-D  
SCALA 1:00



VISTA RETRO



Studio Tecnico – Laporta geom. Domenico  
Bondono (FE) P.zza Garibaldi 72  
San'Agata sul Santerno (RA) Via Penazzi 27/a  
domelaporta@gmail.com – domenico.laporta@geopec.it – 347.3794252

	A_sdf_07; RILIEVO EDIFICI DA DEMOLIRE; PIANTE E SEZIONI	SCALA: 1:100
		DATA: 7 NOV 2019
REVISIONE: REV 0	FG.: 19 MAPP.: 58 SUB.: 1	TECNICI: RESTITUZIONE GRAFICA: GEOM. DOMENICO LAPORTA
SETTORE:		
COMMITTENTE: Comune di Casola Valsenio RUP Dott. Calzolaio Felice		
Comune: Casola Valsenio (RA) Str. della Lavanda		

